



Mental Health East Center

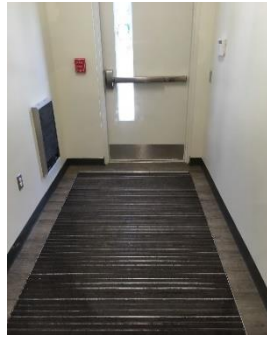
Henrico County, Virginia

LEED Project Profile



**LEED® Version 4
Building Design &
Construction
Gold Certified
October 2020**

Henrico County's Mental Health East Center is a new construction outpatient health facility located in the eastern part of the county. The project earned Leadership in Energy and Environmental Design (LEED®) green building certification at the Gold level by reducing environmental impacts in the areas of site design, water and energy use, building materials, and indoor environmental quality. Achievement of LEED certification enforces Henrico County's commitment to environmental stewardship, resource use reduction, and enhancing quality of life for its employees and residents. This is the 17th LEED certified project in Henrico County.



Sustainable Sites issues include location, transportation, stormwater, and parking. Storage for bicycles and preferred parking for fuel-efficient vehicles or carpools is provided. The light pavement and roof reduce the urban heat island effect. The LED parking lot lights reduce light pollution.



Water-Efficient design conserves drinking water. Landscaping with native plants eliminates the need for irrigation. Water-saving plumbing fixtures such as sinks, showers, and flush fixtures are saving over 56,000 gallons of water each year in this building--a 30% reduction compared to standard fixtures.



Energy and Atmosphere strategies reduce energy use and emissions. Well-insulated walls, windows, and roof reduce the load for building systems. Variable HVAC with energy recovery and LED, sensor-operated lights contribute to a nearly 20% energy use reduction compared to standard construction. A solar photovoltaic (PV) system located on the roof of the building reduces the need for grid electricity.



Materials and Resources planning reduces waste and encourages new building materials with less environmental impact. 75% (200 tons) of the construction and demolition waste was recycled. New materials were selected that were made regionally using high recycled content.



Indoor Environmental Quality strategies seek to improve conditions such as air quality, acoustics, and daylight. All adhesives, sealants, paints, flooring, and composite wood used inside this building are low chemical-emitting. Spaces have abundant daylight. Ceiling fans improve thermal comfort.